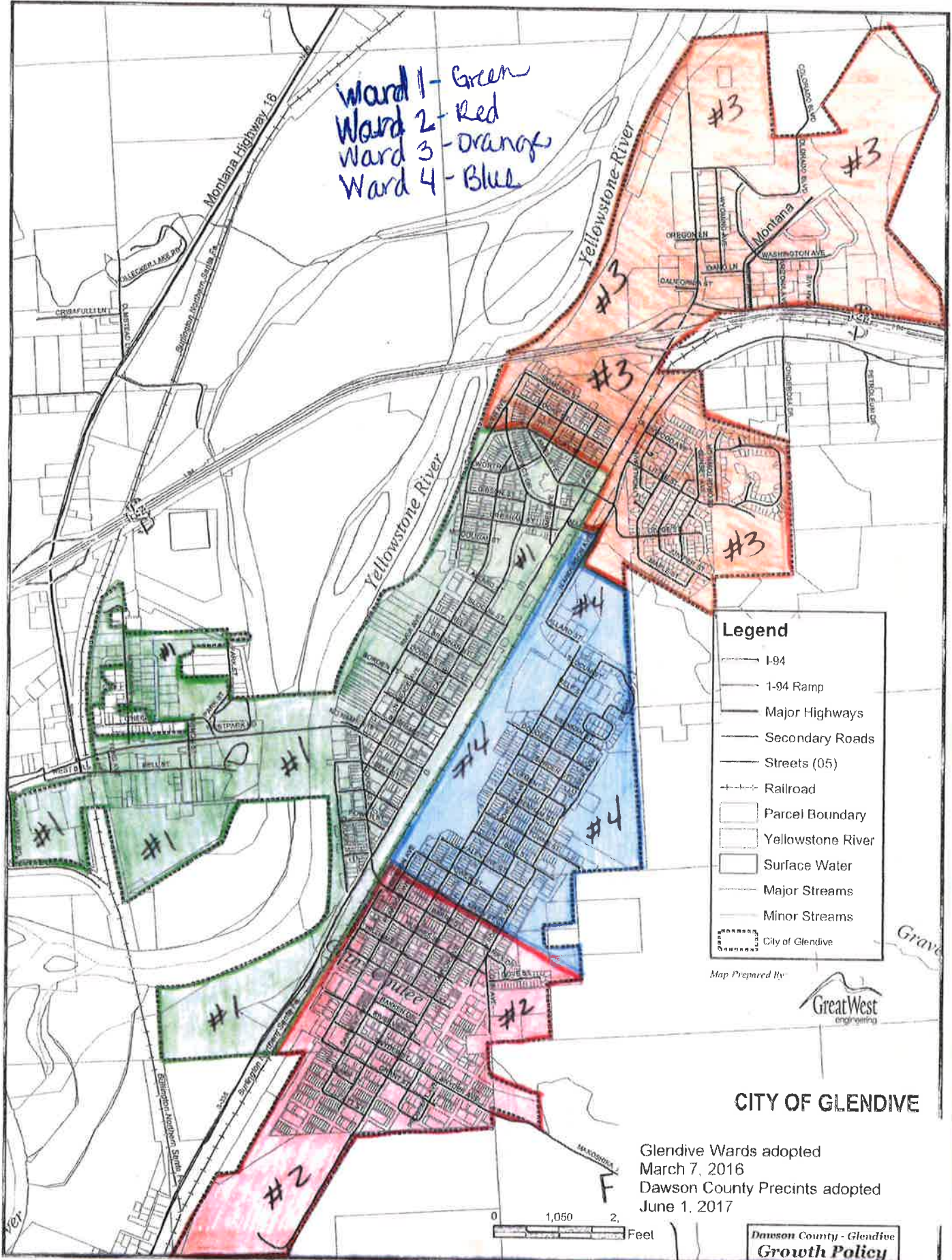


Ward 1 - Green
 Ward 2 - Red
 Ward 3 - Orange
 Ward 4 - Blue

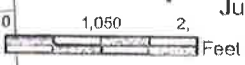


- Legend**
- I-94
 - I-94 Ramp
 - Major Highways
 - Secondary Roads
 - Streets (05)
 - Railroad
 - Parcel Boundary
 - Yellowstone River
 - Surface Water
 - Major Streams
 - Minor Streams
 - City of Glendive

Map Prepared By
 GreatWest
 engineering

CITY OF GLENDIVE

Glendive Wards adopted
 March 7, 2016
 Dawson County Precints adopted
 June 1, 2017



Dawson County - Glendive
Growth Policy